

LEVEL 11

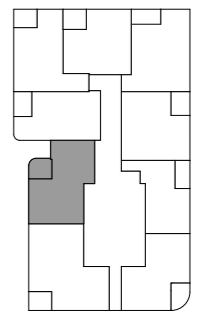
Apartment Number  
**T1 11.09**

**Apartment Area**  
Internal 74.69 m<sup>2</sup>  
External 7.92 m<sup>2</sup>  
TOTAL 82.61 m<sup>2</sup>

All areas measured as per Property Council of Australia Residential Method of Measurement

**Apartment Type**  
2 BED  
2 BATH

**Key plan**



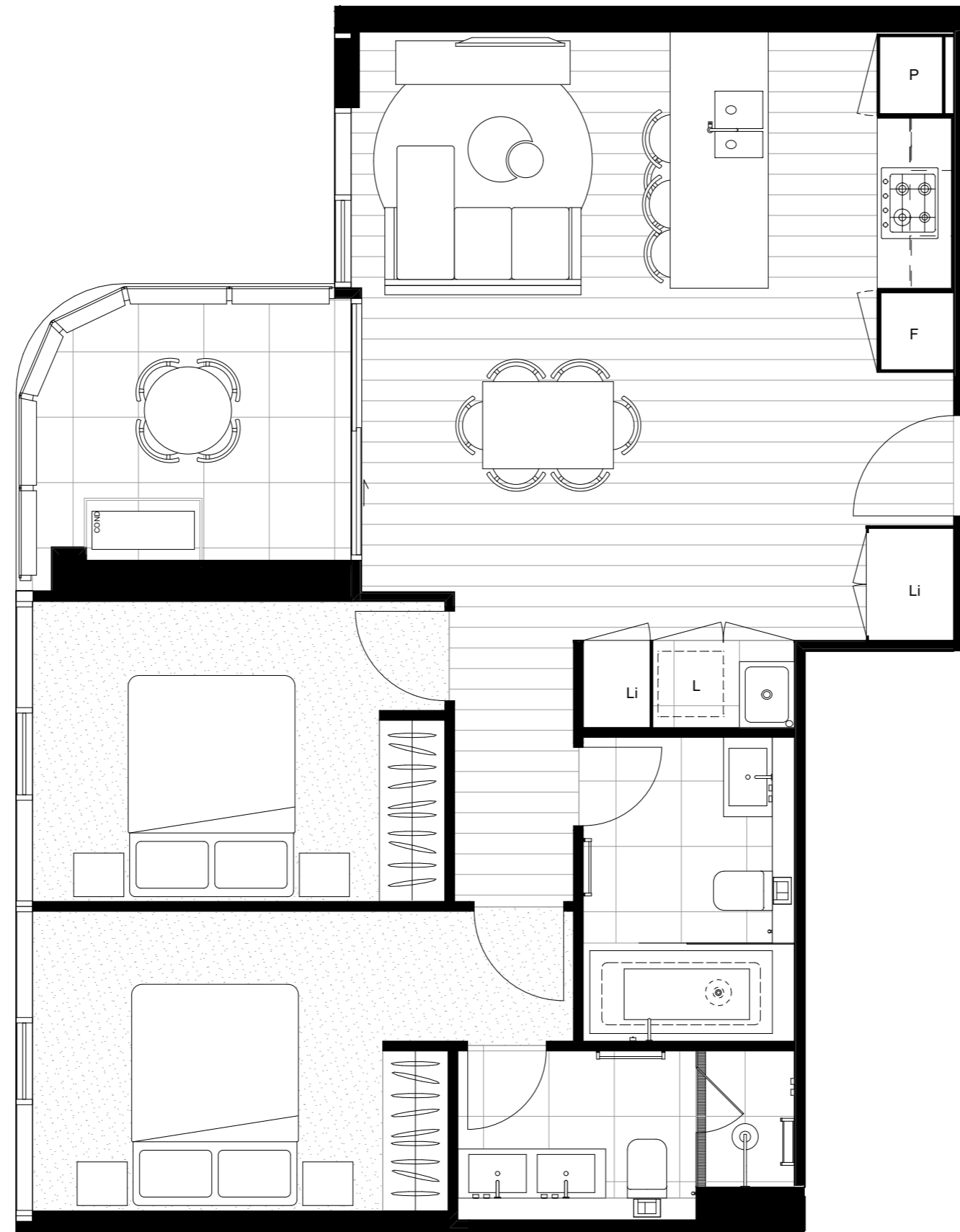
F: Fridge Space  
L: Laundry  
Li: Linen Cupboard  
S: Study  
P: Parity  
A/C: Air Conditioning Condenser Unit

\* Highlight Window in certain Baths/Enrs and Kitchen



Areas referred to on this marketing drawing have been determined according to the Property Council of Australia guidelines (Method of Measurement for residential property) and method of measurement may not relate to the boundaries described or shown on the Plan of Subdivision for this development.

Date of issue: 27/08/2018



Scale 1:50  
@ A3 0 1 2 3 4 5m

